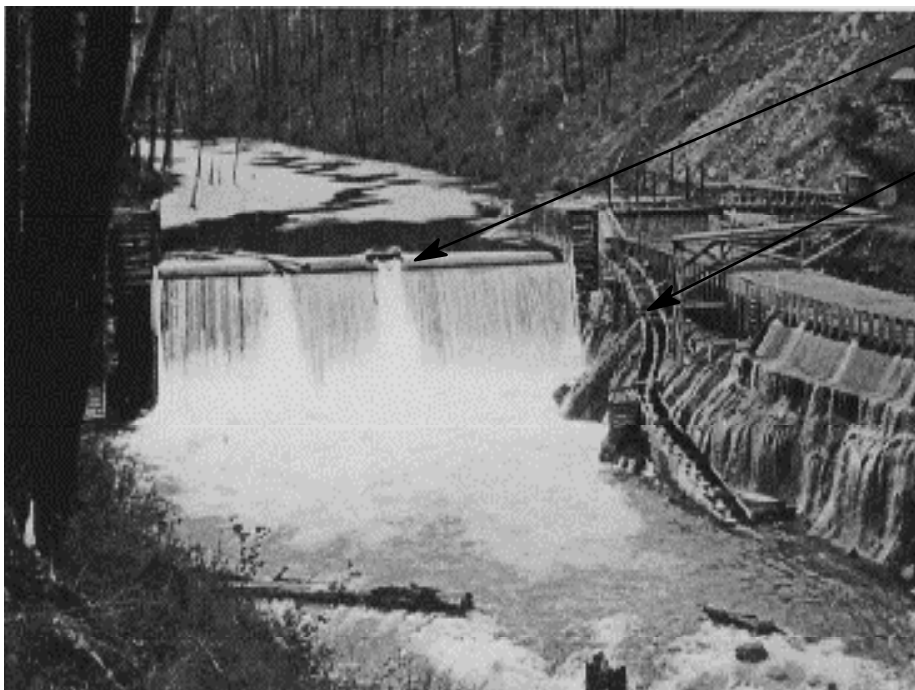


Adult Salmon Attempting to Navigate A Dam Spillway



Without a fish ladder, this salmon could not successfully by-pass the dam

Low-level Dam and Fish Ladder



dam

fish
ladder

Dams, both large and small, are hazards to migrating salmon. The fish ladder shown is a series of steps and pools which let salmon alternate jumping and resting.

Unloading Salmon in the 1920s



Salmon of this size were common in most west coast ports until the 1950

Photos: Washington State Historical Socie