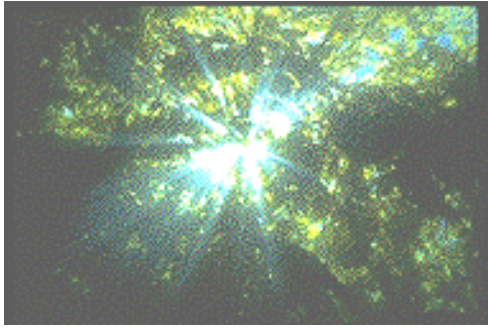
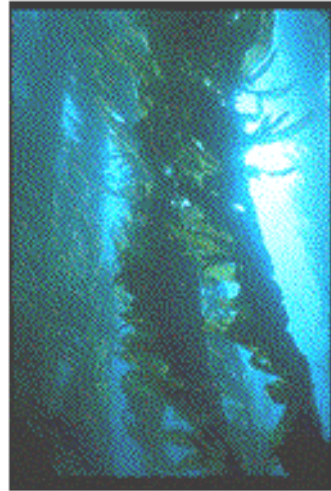


# Kelp Forest Mini-tour



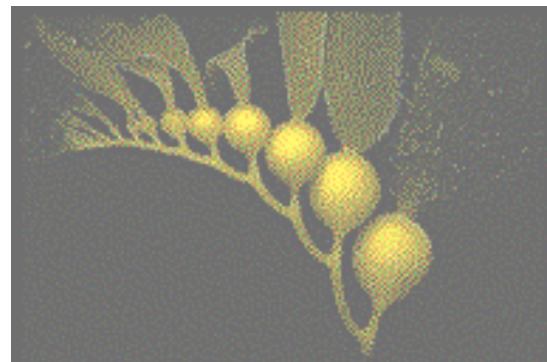
Looking up at the kelp forest canopy.



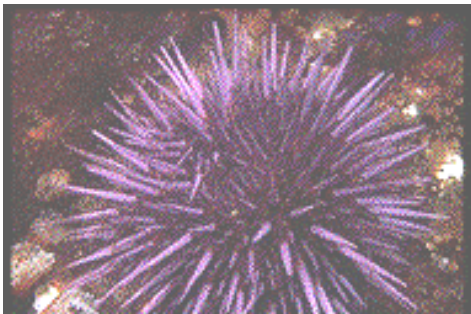
Kelp can grow as much as ten inches per day.



The large leaf-like fronds capture sunlight from the surface.



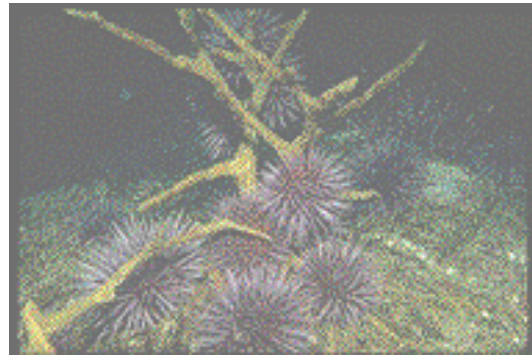
Gas filled floats help the fronds stay near the sunlit surface.



Purple sea urchins eat kelp. Sometimes their numbers are very high.



Giant kelpfish are among the many animals that live in the kelp forest.



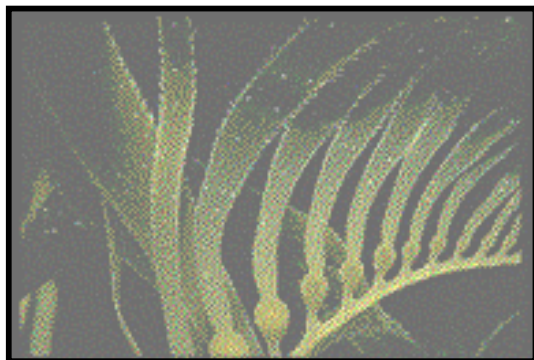
High numbers of purple urchins can destroy areas of the kelp forest



Well camouflaged, island kelpfish live among the holdfasts.



Different animals "make their livings" in the different layers of the kelp forest, from the canopy to the holdfast or base.



The kelp forest is a rich and diverse, but fragile, habitat.



Sea lions and other marine mammals are frequent visitors to the kelp forest.

**Photos courtesy of NOAA Channel Islands National Marine Sanctuary**

*Individual photo credits*

*James Forte*

*Passage Productions*

*James Forte*

*W.B. Evans*

*James Forte*

*Laura Gorodezky*

*Passage Productions*

*Passage Productions*

*James Forte*

*Charles Wheeler*

*James Forte*