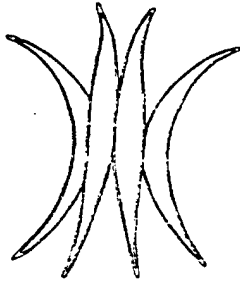


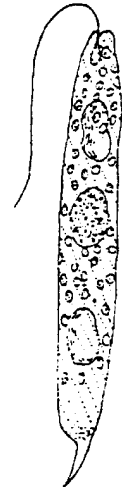
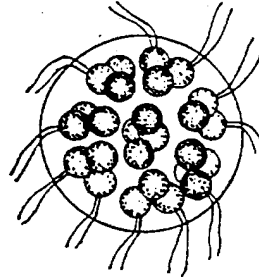
Freshwater Plankton - Identification Sheet



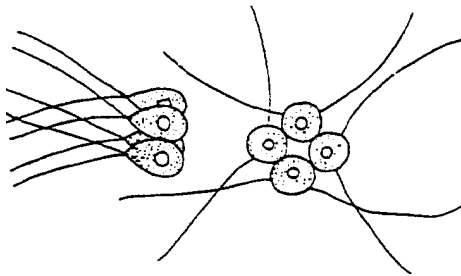
Scenedesmus



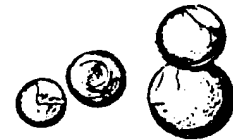
Eudorina



Euglena



amphipod



Chlorella

Gonium



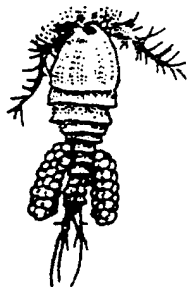
mayfly nymph



Navicula



Paramecium

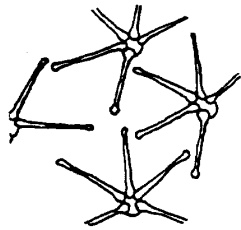


cyclops

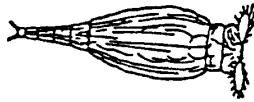


Chlamydomonas

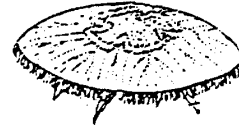
Freshwater Plankton - Identification Sheet



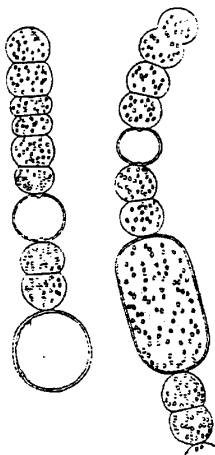
Asterionella



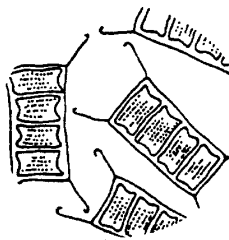
rotifers



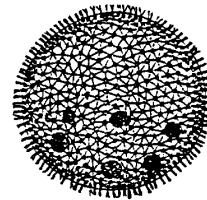
Aurelia



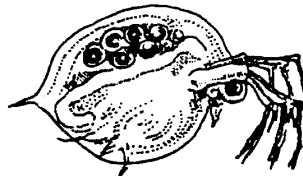
Anabaena



Fragillaria



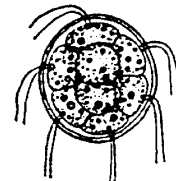
Volvox



Daphnia



ostracod



Pandorina