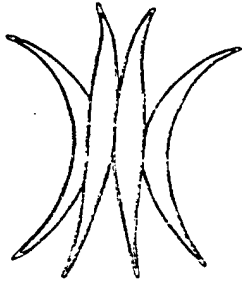
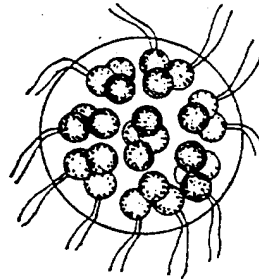


# Freshwater Plankton - Identification Sheet



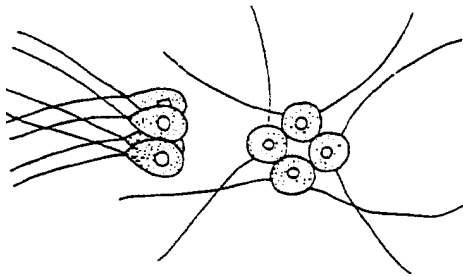
Scenedesmus



Eudorina



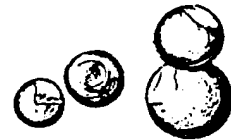
Euglena



Gonium



amphipod



Chlorella



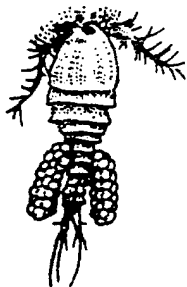
mayfly nymph



Navicula



Paramecium

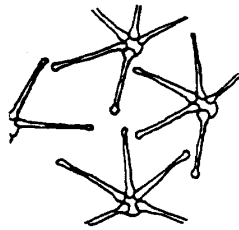


cyclops

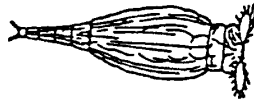


Chlamydomonas

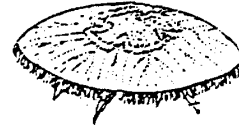
# Freshwater Plankton - Identification Sheet



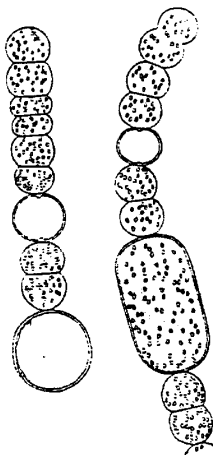
Asterionella



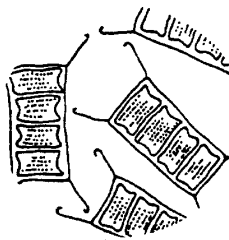
rotifers



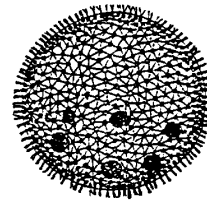
Aurelia



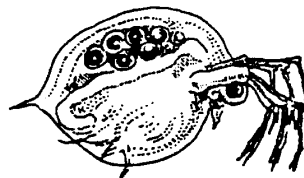
Anabaena



Fragillaria



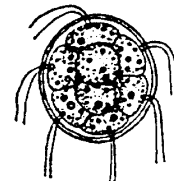
Volvox



Daphnia



ostracod



Pandorina